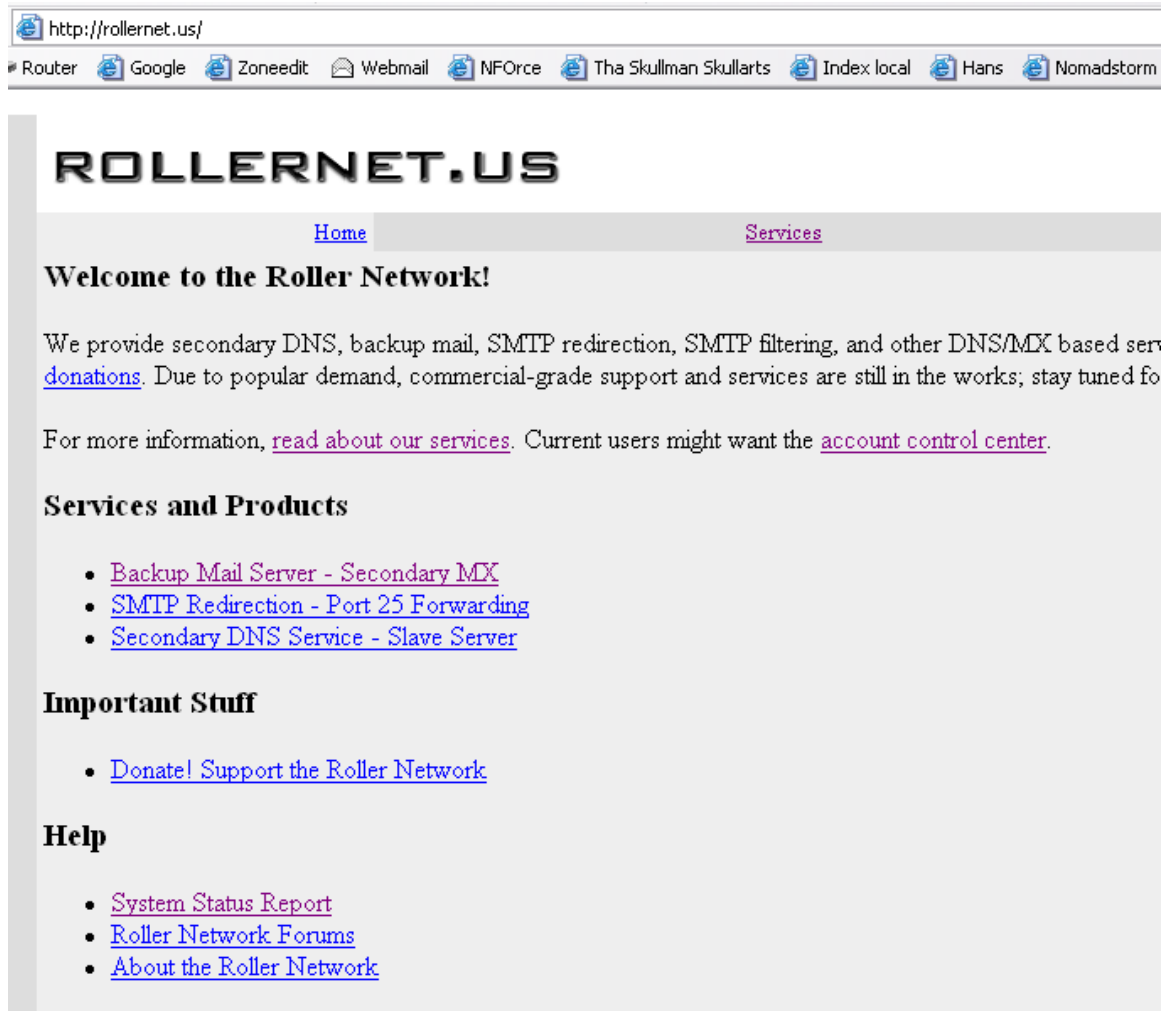


## Backup mailserver service

Heb je een eigen mailservers, en zoek je een gratis mogelijkheid voor fallback (een andere mailservers die tijdelijk jouw mail ontvangt op het moment dat jouw servers/internetverbinding niet in de lucht is)



The screenshot shows a web browser window with the address bar displaying 'http://rollernet.us/'. The browser's toolbar includes icons for Router, Google, Zoneedit, Webmail, NFOrc, Tha Skullman Skullarts, Index local, Hans, and Nomadstorm. The website content features the 'ROLLERNET.US' logo at the top, followed by navigation links for 'Home' and 'Services'. A main heading reads 'Welcome to the Roller Network!'. Below this, a paragraph explains the services provided: secondary DNS, backup mail, SMTP redirection, and SMTP filtering, with a note that commercial-grade services are still in development. Further down, there are links to 'read about our services' and 'account control center'. A section titled 'Services and Products' lists three items: 'Backup Mail Server - Secondary MX', 'SMTP Redirection - Port 25 Forwarding', and 'Secondary DNS Service - Slave Server'. Another section, 'Important Stuff', contains a link to 'Donate! Support the Roller Network'. Finally, a 'Help' section lists links for 'System Status Report', 'Roller Network Forums', and 'About the Roller Network'.

Op de website van rollernet.us (<http://rollernet.us/>) maak je een account aan, klik op: Backup Mail Server – Secondary MX

Klik op: [register for an account!](#)

# ROLLERNET.US

[Main Menu](#)

[Mail Services](#)

[Donate](#)  
[Account](#)  
[Registration](#)  
[Password](#)  
[Recovery](#)  
[Account](#)  
[Confirmation](#)

## Register for an Account

Fill out the form below to register for an account on the Roller Network. All fields are required. [are appreciated](#). A confirmation message will be sent to the email address you enter in order to

Username:

Email Address:

Password:

Password (verify):

From time to time we send email with system updates, maintenance notices, and other news. Please choose your contact preference:

- You can contact me  
 System notices only  
 Do not contact me

Vul het formulier in (met je eigen gegevens, bovenstaande zijn fictief)  
Klik op submit, je ontvangt een mail met een Confirmation Key

# ROLLERNET.US

[Main Menu](#)

[Donate](#)  
[Account](#)  
[Registration](#)  
[Password](#)  
[Recovery](#)  
[Account](#)  
[Confirmation](#)

## Register for an Account

Registration is complete! In order to activate your account, an

Username: alfredo

Email: alfredo@alfredo.tmfweb.nl

Confirmation Key:

Kopieer en plak de Key (om typefouten te voorkomen en klik op submit

# ROLLERNET.US

[Main Menu](#)

[Donate](#)  
[Account](#)  
[Registration](#)  
[Password](#)  
[Recovery](#)  
[Account](#)  
[Confirmation](#)

## Confirm Your Account

## Activation Successful!

Your account has been confirmed! You may now [log in](#).

Je account is geactiveerd, klik op log in

# ROLLERNET.US

[Main Menu](#)

[Mail Services](#)

[Donate](#)  
[Account](#)  
[Registration](#)  
[Password](#)  
[Recovery](#)  
[Account](#)  
[Confirmation](#)

Welcome to the Roller Network account control center! Please log in below.

Username:

Password:

Login

[Switch to SSL Mode](#)

Log in (met je zojuist aangemaakte gegevens)

# ROLLERNET.US

[Main Menu](#)

[Mail](#)

[Resource](#)  
[Access](#)  
[Change](#)  
[Password](#)  
[Preferences](#)

Thank you for choosing the Roller Network! Please [consider donating](#) if you

Welcome, alfredo! Choose a function below.

[Donate](#)  
[Log Out](#)

## Mail Services

- [Mail Domain Settings](#) - Settings for all mail domain services.
- Dropbox - POP3/IMAP based mail delivery.

Klik op Mail Domain Settings

# ROLLER.NET.US

[Main Menu](#)

[DNSBL Filter](#)

[SPF Filter](#)

[Greylisting Filter](#)

[Blacklist Filter](#)

[Whitelist](#)

[Mail Log](#)

[Donate](#)

[Log Out](#)

## Mail Services

Manage your domains for mail services below. See the [help page](#) on

## Add Domain

Choose type:

## Manage Domains

Kies voor Secondary MX (single/multi dest.), en klik op next

# ROLLER.NET.US

[Main Menu](#)

[Mail Services](#)

[DNSBL Filter](#)

[SPF Filter](#)

[Greylisting Filter](#)

[Blacklist Filter](#)

[Whitelist](#)

[Mail Log](#)

[Donate](#)

[Log Out](#)

## Mail Services

Manage your domains for mail services below. See the [help page](#) on how to set up

## Add Domain

Choose type:    
Domain Name:   
Logging:    
Comment:  (optional)

Vul je domainnaam in, kies bij logging wat je wilt (Filter Only, All of None)  
En bij Comment kan je een eigen tekst invullen, klik op submit

**ROLLERNET.US**

[Main Menu](#)   [Mail Services](#)   [DNS Services](#)   [RollerNet Help](#)   [System Status](#)

[DNSBL Filter](#)   [SPF Filter](#)   [Greylisting Filter](#)   [Blacklist Filter](#)   [Whitelist Filter](#)   [Mail Log](#)   [Donate](#)   [Log Out](#)

### Mail Services

Manage your domains for mail services below. See the [help page](#) on how to set up your DNS to use this service to redirect mail for your domain to your mail server.

#### Add Domain

Choose type:

#### Manage Domains

	Domain	Type	Status	Logging	Delete	Comment
<a href="#">Edit</a>	alido.nl	Secondary MX	Active	All	<input type="checkbox"/>	fed's domain

Click on "Edit" to change the mail domain type (secondary, redirection, etc) and comment.

Logging options are:

- None - do not log anything for this domain
- Filters Only - only log if a filtering option is enabled
- All - log everything unconditionally

Eventueel kan je meerdere domains onder hetzelfde account beheren

Klik op: [help page](#) (in bovenstaand venster)

**ROLLERNET.US**

[Main Menu](#)   [Mail Services](#)   [DNS Services](#)

[Donate](#)   [Log Out](#)

### Roller Network Help

If you have a question that isn't covered here, [check the FAQ](#) before contacting us.

- [Mail Service Setup](#)
- [Secondary DNS Service Setup](#)
- [DNSBL Filtering](#)
- [Sender Policy Framework \(SPF\)](#)
- [Greylisting Filter](#)
- [Blacklist Filter](#)
- [Whitelisting](#)

### Mail Service Setup

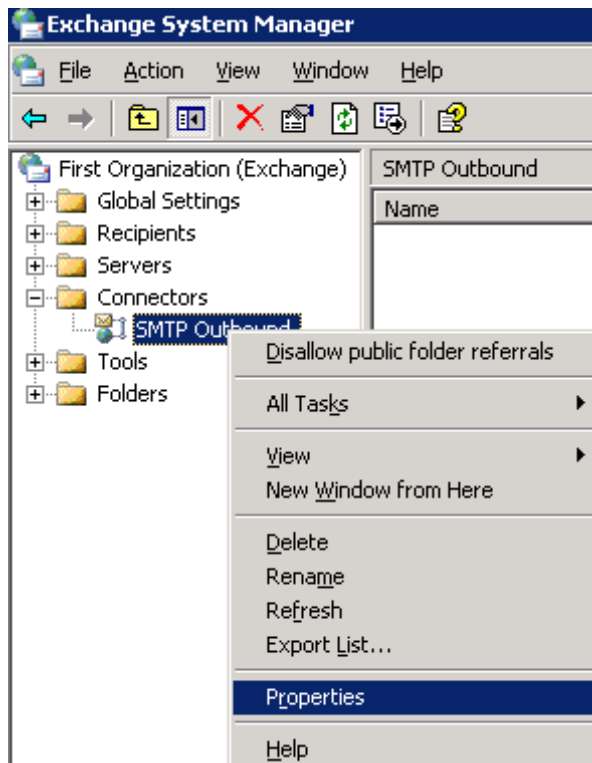
For backup mail service, update your DNS to include a MX records for "mail.rollernet.us" and "mail2.rollernet.us" should be the primary. For example, your MX records could look like this:

```
IN MX 0 mail.yourserver.net.
IN MX 10 mail.rollernet.us.
IN MX 10 mail2.rollernet.us.
```

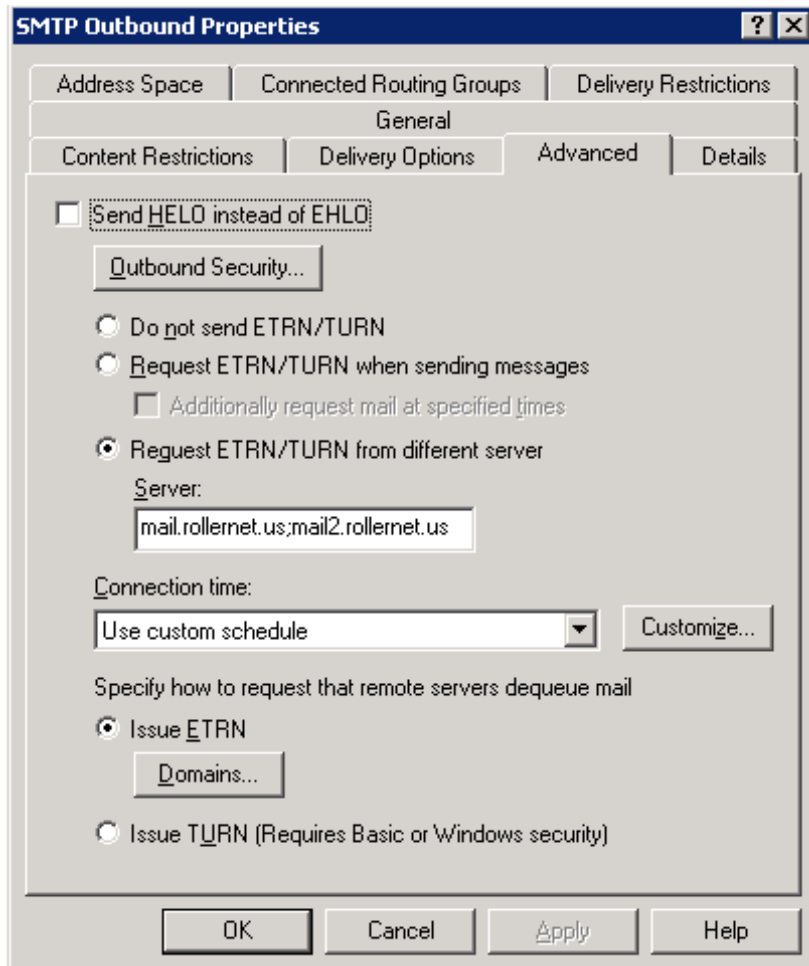
If the MX0 server is down, the mail will go to the MX 10 servers until the other comes back up. The ETRN command is recommended for the Roller Network mail servers to distribute the load.

Lees bovenstaande scherm door, het gaat voornamelijk om de MX-records van rollernet.us, deze moet je opgeven bij je DNS setting (afhankelijk waar je dit host, dit kan in mijn geval zoneedit (<http://www.zoneedit.com>) zijn, maar kan ook daar waar je domainname is geregistreerd, DNS aanpassen valt buiten deze handleiding, omdat je dat mogelijk zelf wel weet

## Aanpassingen in Exchange System Manager:



Open Exchange System Manager, browse naar connectors en klik rechts op SMTP Outbound (of hoe je zelf je SMTP connector genoemd hebt, en klik op: properties



Klik op het tabblad advanced en selecteer: Request ETRN/TURN from different server

Vul bij Server: de MX-record van rollernet.us in

- mail.rollernet.us

- mail2.rollernet.us

Kies een schedule waar jij je goed bij voelt (per 15 minuten of per uur selecteerbaar)

Klik op knop Domains...

En voeg hier je domain toe (b.v. alfredo.nl)

Vanaf nu is alles ingesteld en voorbereid en komt je mail altijd binnen